

**Chip Transfer
Instruction
CF258&CF289**

THANKS

HP CF258A/X & CF289A/X/Y Chip Transfer Instruction

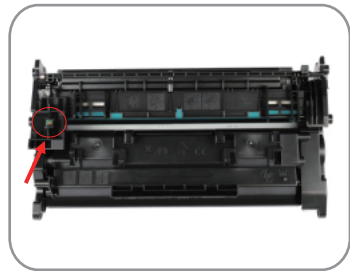
HP CF258A/X & CF289A/X/Y Chip Transfer Instruction

Required Tools



Tweezers

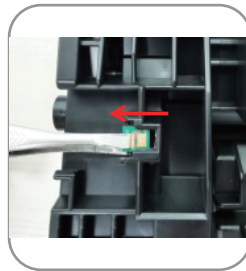
Removing the chip from original HP cartridge



A Locate the chip on the original HP cartridge as shown in the photo above (red arrow indicates the location of the chip).



B Use tweezers to break off the plastic tabs securing the chip to the slot.

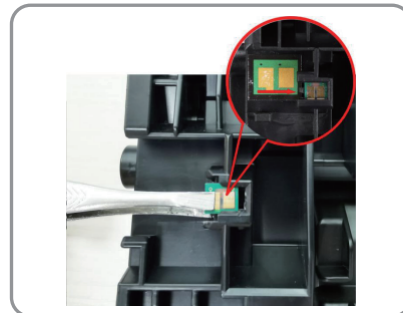


C Firmly grasp the chip and pull it out of the slot using tweezers. Note: Remember the position of the chip, its orientation must be the same during the installation.

Installing the chip into the new cartridge



A Align the chip with the slot and slide it inwards until it is flush against the end of the slot.



B Verify that the chip is flush against the end of the slot and make sure the orientation of the chip is the same as in the photo above.

Note: After installing the cartridge, the printer will display a warning message, as in the photos shown below. Please note, the warning message will not interfere with the printing process, and you may disregard it.



Note: When printing, a pop-up warning message will be displayed on your computer screen. To disable the message, click the Snooze button and select "2 Months" from the dropdown menu. The message will be disabled for a selected period.

